

ARCUS
May 2006

Polar Politics: The Marriage of
Scientists, Stakeholders and
Policymakers

ARCUS Conference Statement

- “The Arctic is a complex integrated system of natural, physical and social domains inextricably connected to the larger global system.” Our goal is to “...develop partnerships and innovations to transcend disciplinary, geographical, political and mission-related boundaries.”
- This is important for many reasons, including the complexity of the issues, scarce resources, agency budget constraints, and rapidly changing systems.

Questions to Address

- How can scientists better communicate their research so stakeholders and policymakers understand it?
- How can we make it easier (and more desirable) for policymakers and stakeholders to use that research to improve decisions?
- How can we make science that is relevant to policymakers and stakeholders more interesting to the scientific establishment ?

Changing World

- Population
- Technology
- Information
- Globalization
- Resource utilization
- Species extinction
- Governance
- Climate change

Study of Environmental Arctic Change

“...increasing average annual surface air temperatures, decreasing summer sea ice extent and sea ice mass, changing ocean circulation, northward movement of tree lines and vegetation zones, thawing glacial ice masses and permafrost and changing socioeconomic dynamics” (SEARCH 2005, vii)

Shishmaref, Alaska

- One of dozens of communities at risk from coastal erosion and flooding
- Adaptation strategies: move the village?



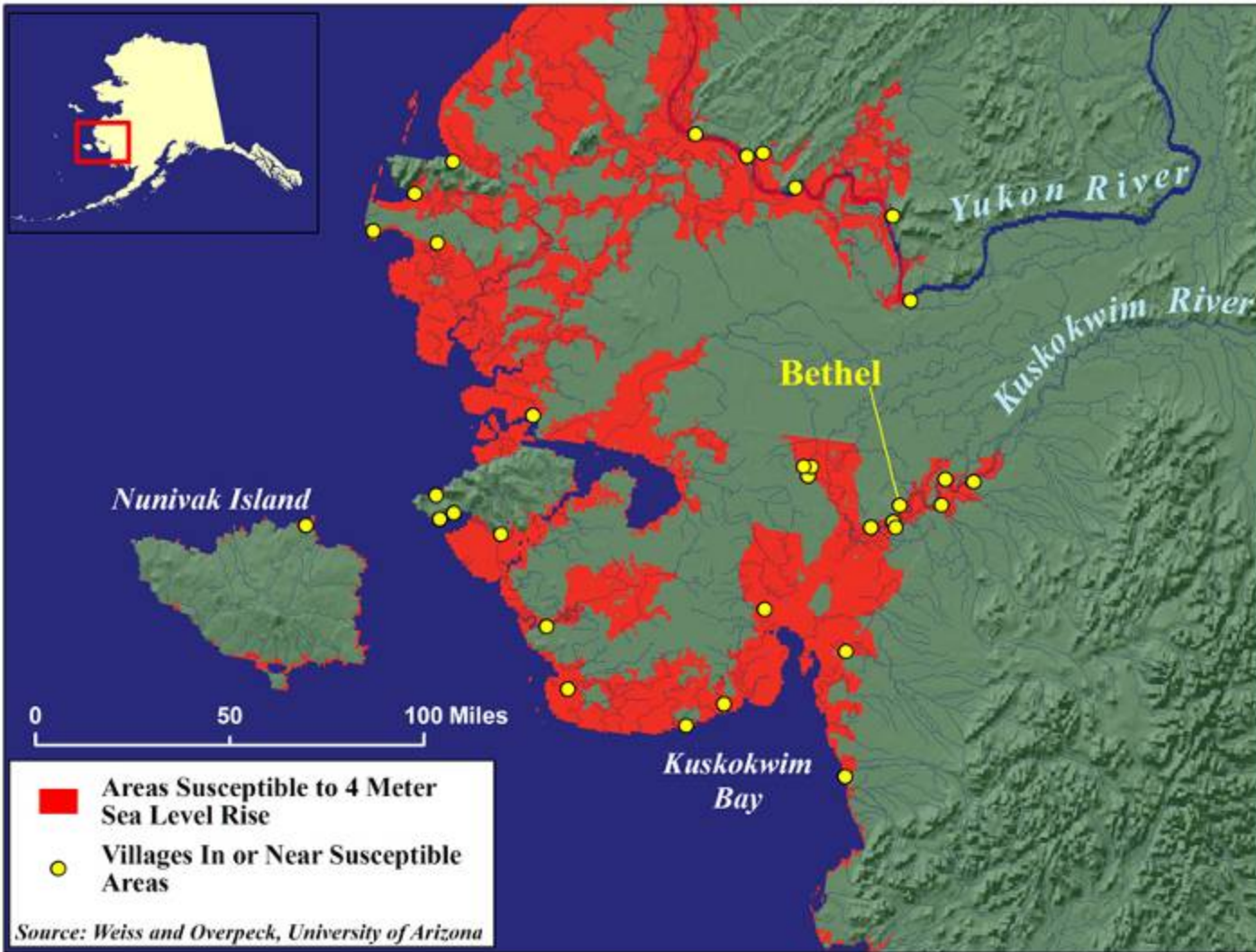
Photos by Tony A. Weyiouanna Sr.

Shishmaref, Alaska

10-08-02 Storm



Erosion rate: These two photos were taken two hours apart. Note the ATV tracks in the road and the 55 gallon barrel. This road no longer exists.



Underutilization of Scientific Research by Decision-Makers

- Time
- Credibility
- Literacy
- Communication
- Culture

Solution?

- Strengthen existing organizations and programs that foster improved communication and collaboration among stakeholders, decision-makers, and scientists.
- Create new organizations in areas where none now exist, modeled on the most successful examples.
- Reward behavior of individuals and organizations that adopt best practices and achieve good marriages of stakeholders, policymakers, and scientists.



Photo by Charles Wohlforth







- ARCUS
- Arctic Council
- IPY
- U.S. Arctic Research Commission
- ICC
- International Whaling Commission
- NOAA RISAs
- NPFMC/NPAFC
- Aldo Leopold School Fellowship
- Union of Concerned Scientists



Fran Ulmer

- Institute of Social and Economic Research
- University of Alaska
- www.iser.uaa.alaska.edu