

# Managing Future Challenges In Arctic Research



European  
Polar  
Consortium



## Common Perspectives from European Polar Agencies

Dr Paul Egerton

Executive Director-European Polar Consortium

European Science Foundation



European  
Polar  
Consortium



- **EU Organisational structures**
- **EU Polar Research Programmes**
- **EU Polar Infrastructures and assets**
- **Policy and decision support frameworks for the EU**



European Polar Consortium is a composed of 25 Government Ministries, Funding Agencies and National Polar RTD Authorities from 19 European countries and the ESF/European Polar Board. With a combined critical mass of over 500 Million Euros per annum\* it is the most significant initiative to coordinate European Polar RTD Programmes and Infrastructures ever attempted.

European Polar Consortium will exert a massive and positive impact on this domain and lead to long-term durable partnerships within Europe. Strong Political impetus for International Cooperation and partnership

The European Polar Consortium is a Coordination Action financed by the European Commission under Framework RTD Programme 6 EUROPOLAR – ERA-NET ERAC 517842



-  France (EPC Management and Direction Functions IPEV & ESF)
-  Austria
-  Belgium
-  Bulgaria
-  Czech Republic
-  Denmark
-  Estonia
-  Finland
-  Germany
-  Greenland
-  Italy
-  Netherlands
-  Norway
-  Poland
-  Russian Federation
-  Romania
-  Spain
-  Sweden
-  United Kingdom



## European Polar Consortium Partner Countries

25 Partners from 19 Countries

The European Polar Consortium is a Coordination Action financed by the European Commission under Framework RTD Programme 6 EUROPOLAR – ERA-NET ERAC 517842

# EU Research Programmes Arctic



**DAMOCLES** (Developing Arctic Modelling and Observation Capabilities for long-term environmental Studies)

45 Institutions from 11 Countries (including Russian Federation)

20 Million Dollars from EU

Approx 20 Million from Institutes

Technological advancements  
And real time data streams

**SEARCH For DAMOCLES**





European  
Polar  
Consortium

## **IPICS II**

### **International Partnerships in Ice Core Sciences**

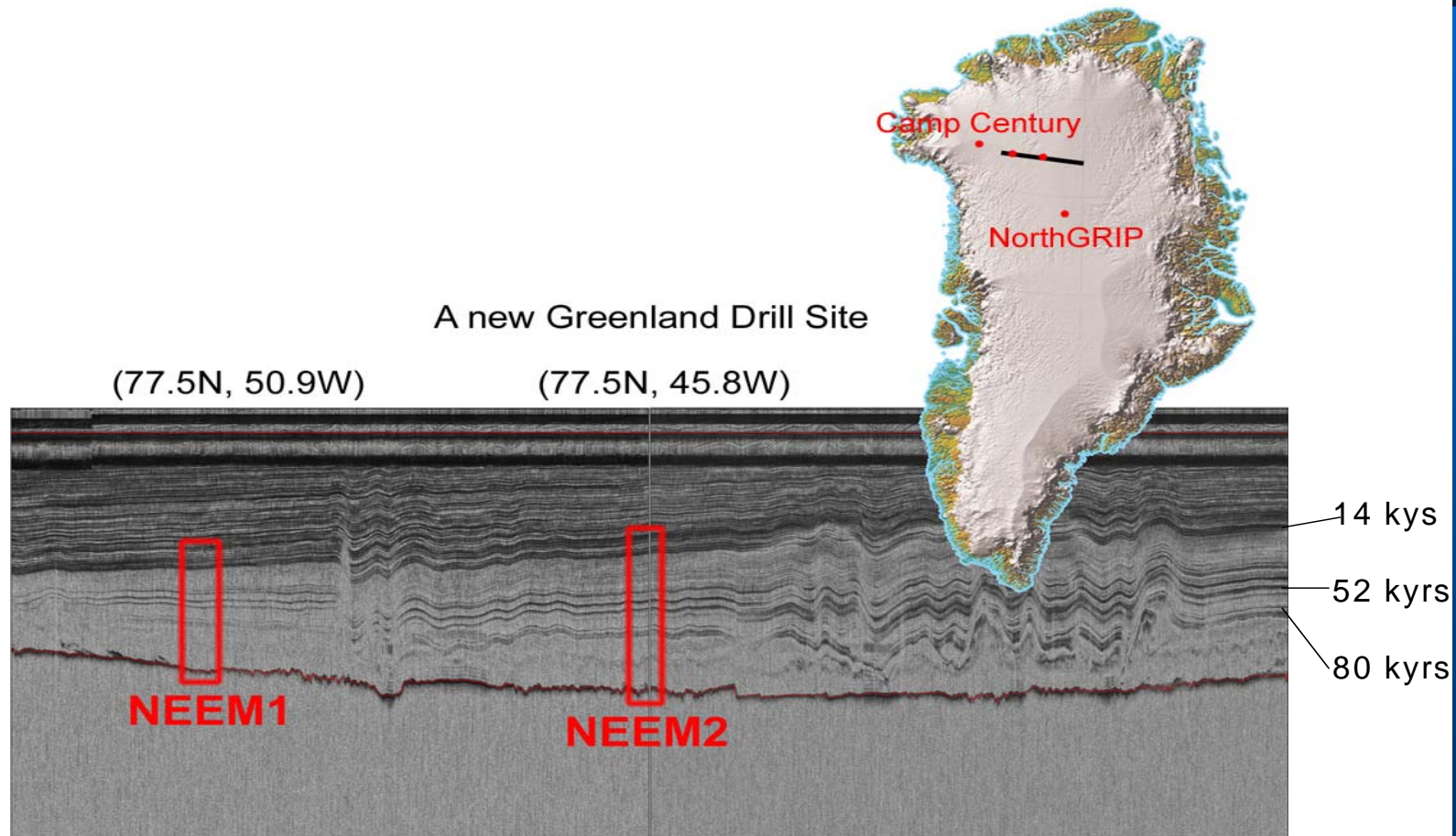


### **Roadmaps and Pathways to Implementation**

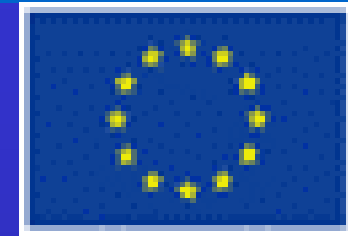
Deep Sites Greenland, Coastal Arrays, Arctic Icecaps  
Major Long term science planning



# Research Programmes- NEEM



RES: P. Gogineni

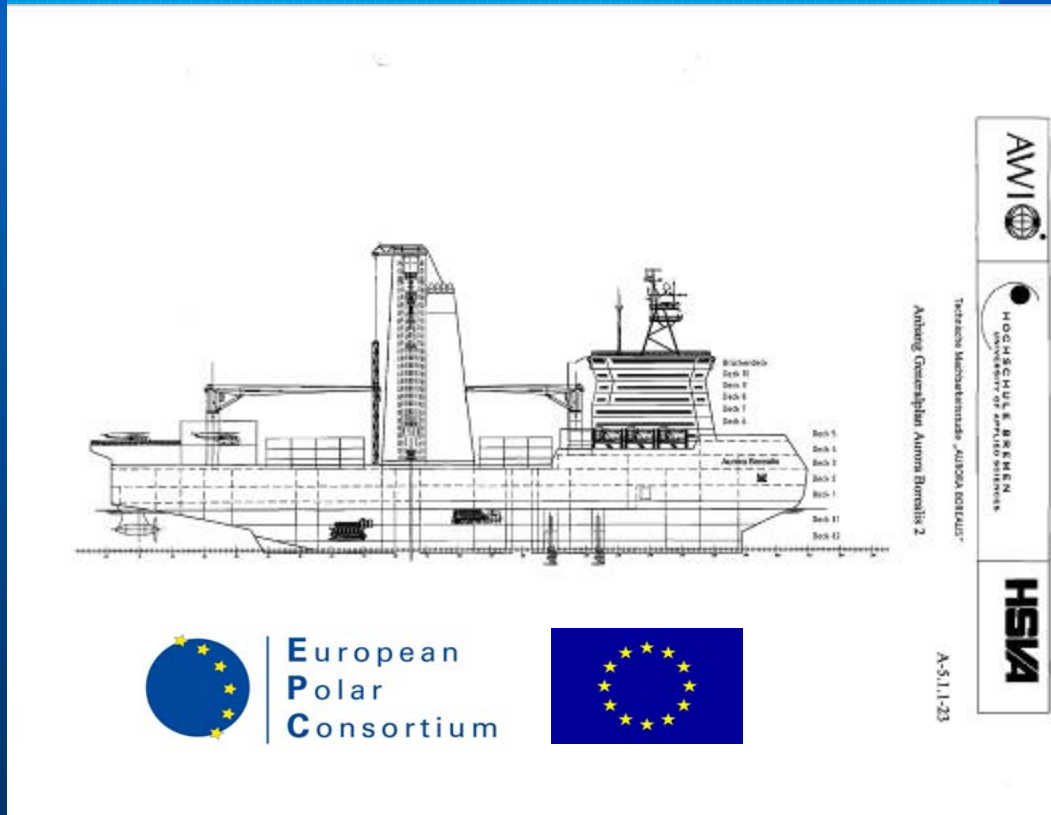


## RATIONALE

- The general objective is to establish a European information architecture of National Polar RTD Programme and Polar Research Infrastructures
- Two questionnaires (Programmes) (Infrastructures) are the **technical tools** to provide a **starting picture** of the existing national regulations, priorities, infrastructures and capacities which constitutes the European Polar Research system.
- Their knowledge is the basis for **increasing capacity as a whole**, throughout the improvement of cooperation and mutual coordination of the European National Polar Programmes into a networking vision.



# Arctic Infrastructures

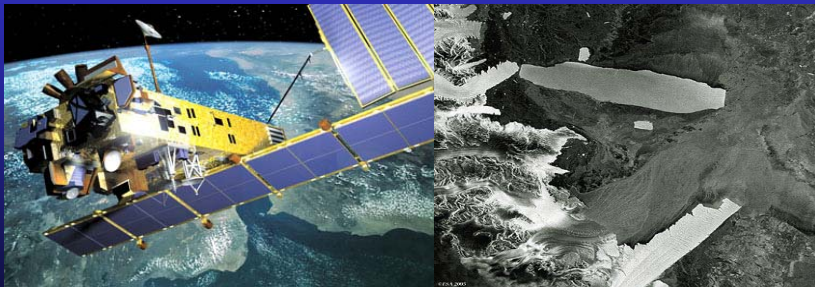


European Research Icebreaker  
AURORA BOREALIS

# Policy and Decision support for EU Governments

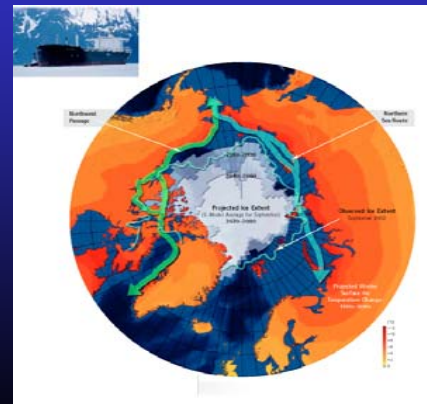
- Political declaration on the Northern Dimension by end 2006
- GMES Polar View
- EPC Polar Alert prototype platform

## OBSERVING THE POLAR REGIONS



- STRATEGIC- DECISION SUPPORT FOR EUROPEAN GOVERNMENTS
- DETECTING ENVIRONMENTAL THREATS
- SUPPORTING SCIENCE

## HUMAN AND ECONOMIC ASPECTS



- THE NORTHERN SEA ROUTE (TRADE)
- IMPACTS OF CLIMATE CHANGE ON NORTHERN INDIGENOUS COMMUNITIES
- OIL & GAS EXPLORATION IN THE RUSSIAN ARCTIC-ENERGY SECURITY
- FISHERIES AND FOOD SECURITY
- STRATEGIC AND TERRITORIAL ISSUES

## IPY 2007-2008 as a Unique Opportunity



European  
Polar  
Consortium



- Education, Outreach and Communications and visibility of scientific research in the Polar Regions to the public
- European Task force of Educators, Communicators and Outreach specialists 'The Polar Connection'
- Durable platforms for the future –partnerships scientists, Public and the government





**Websites:** [www.europolar.org](http://www.europolar.org) **Main Site**  
[www.europolar.ru](http://www.europolar.ru) **Russian Liaison Office**  
**Email:** [europolar@esf.org](mailto:europolar@esf.org)

The European Polar Consortium is a Coordination Action financed by the European Commission under Framework RTD Programme 6 EUROPOLAR – ERA-NET ERAC 517842